

12615 PINEROCK LANE

**NORTHSTONE**<sup>TM</sup>  
BUILDERS  
*Building Luxury*<sup>SM</sup>



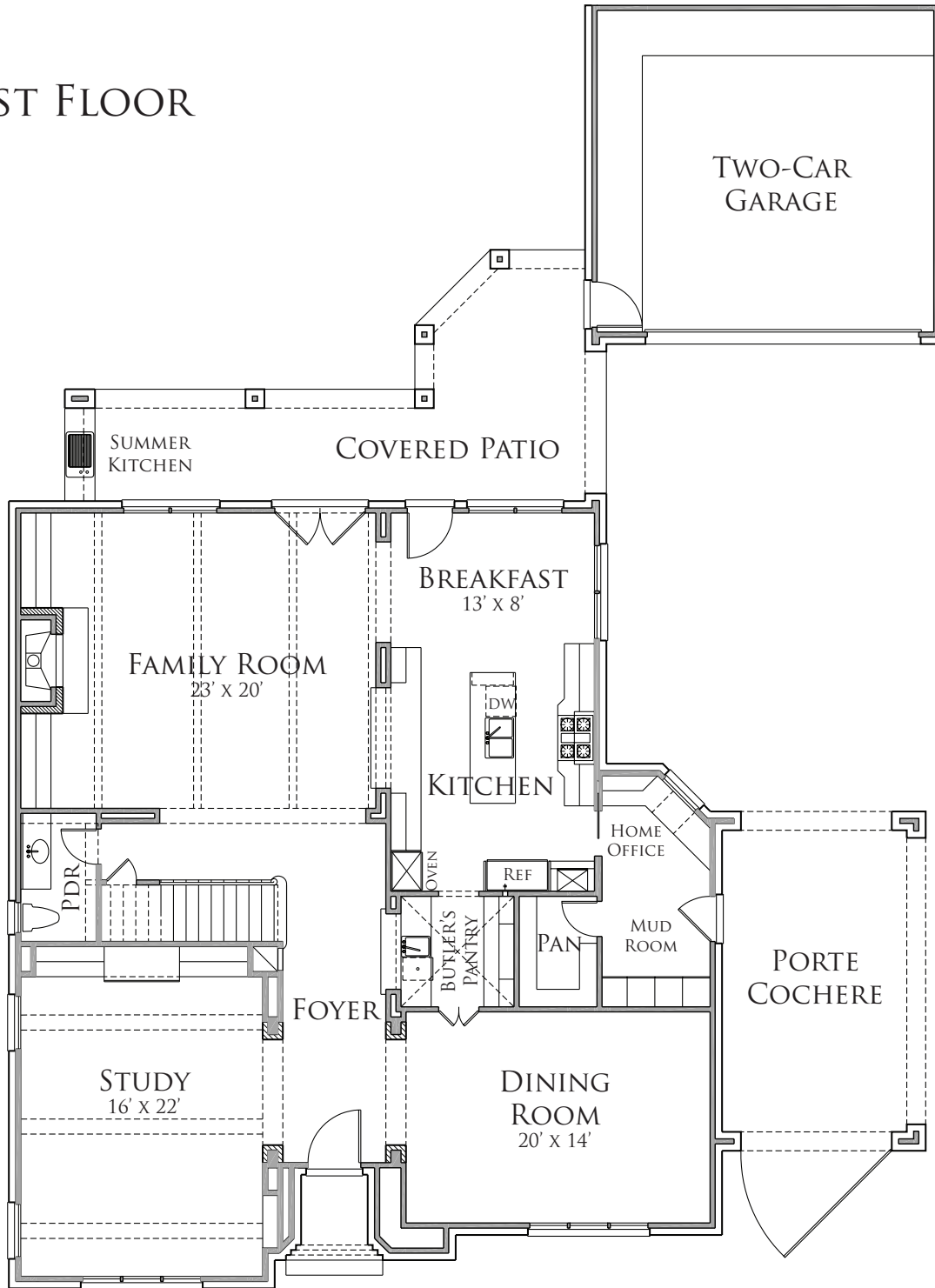
FOUR BEDROOM | THREE AND A HALF BATH  
4,591 SQUARE FEET

[CLICK HERE FOR FIRST FLOOR PLAN](#)  
[CLICK HERE FOR SECOND FLOOR PLAN](#)

Builder reserves the right to modify floorplans, elevations, and features without notice. Floorplans and exterior renderings are artist's conceptions. Square footage and dimensions are approximate, and may vary by elevation.



FIRST FLOOR



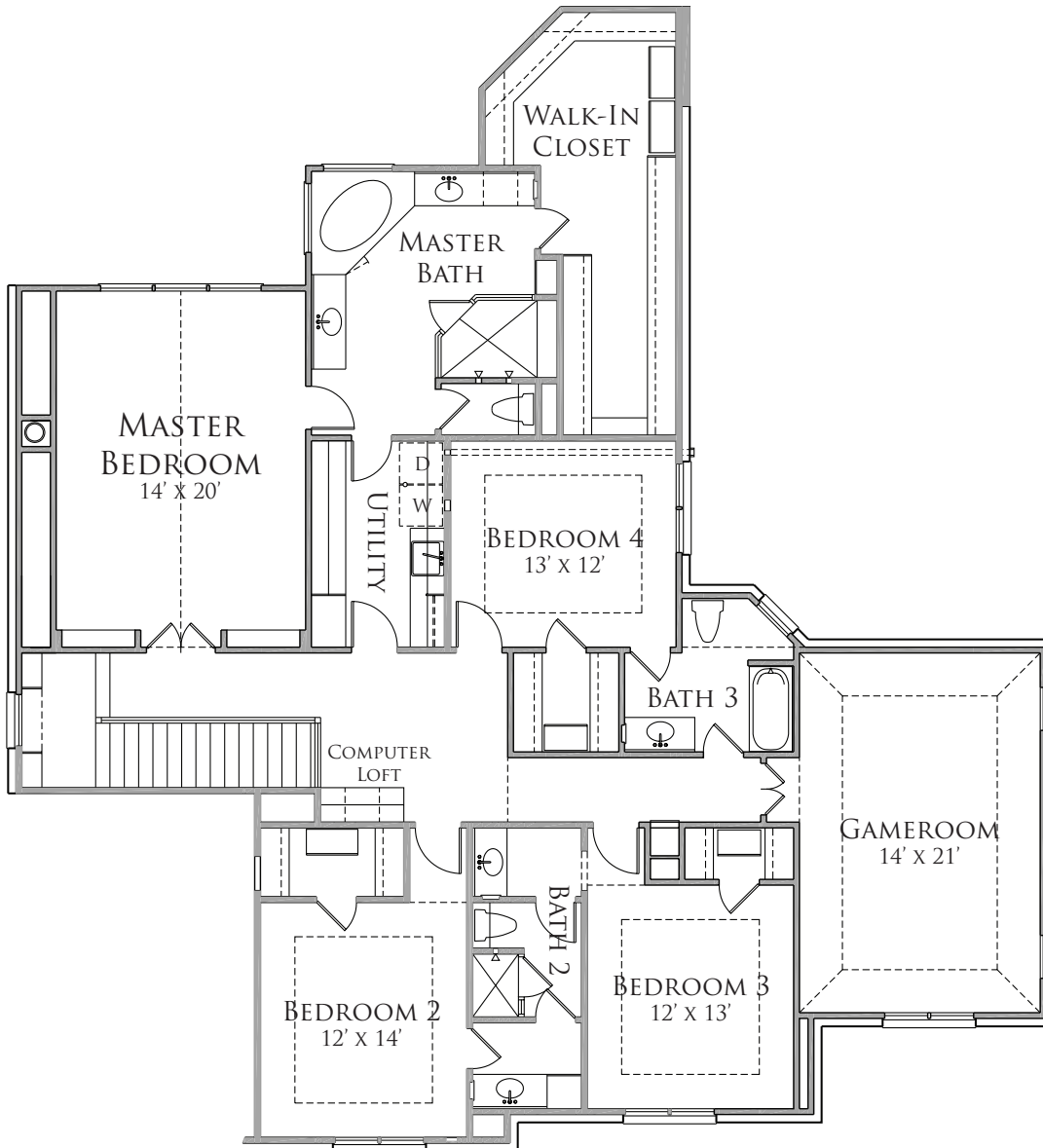
[CLICK HERE FOR SECOND FLOOR PLAN](#)  
[CLICK HERE FOR ELEVATION](#)

Builder reserves the right to modify floorplans, elevations, and features without notice. Floorplans and exterior renderings are artist's conceptions. Square footage and dimensions are approximate, and may vary by elevation.



12615 PINEROCK LANE

SECOND FLOOR



[CLICK HERE FOR ELEVATION](#)  
[CLICK HERE FOR FIRST FLOOR PLAN](#)

Builder reserves the right to modify floorplans, elevations, and features without notice. Floorplans and exterior renderings are artist's conceptions. Square footage and dimensions are approximate, and may vary by elevation.

