

# 9 WALKING STICK

**NORTHSTONE**<sup>TM</sup>  
BUILDERS  
*Building Luxury*<sup>SM</sup>



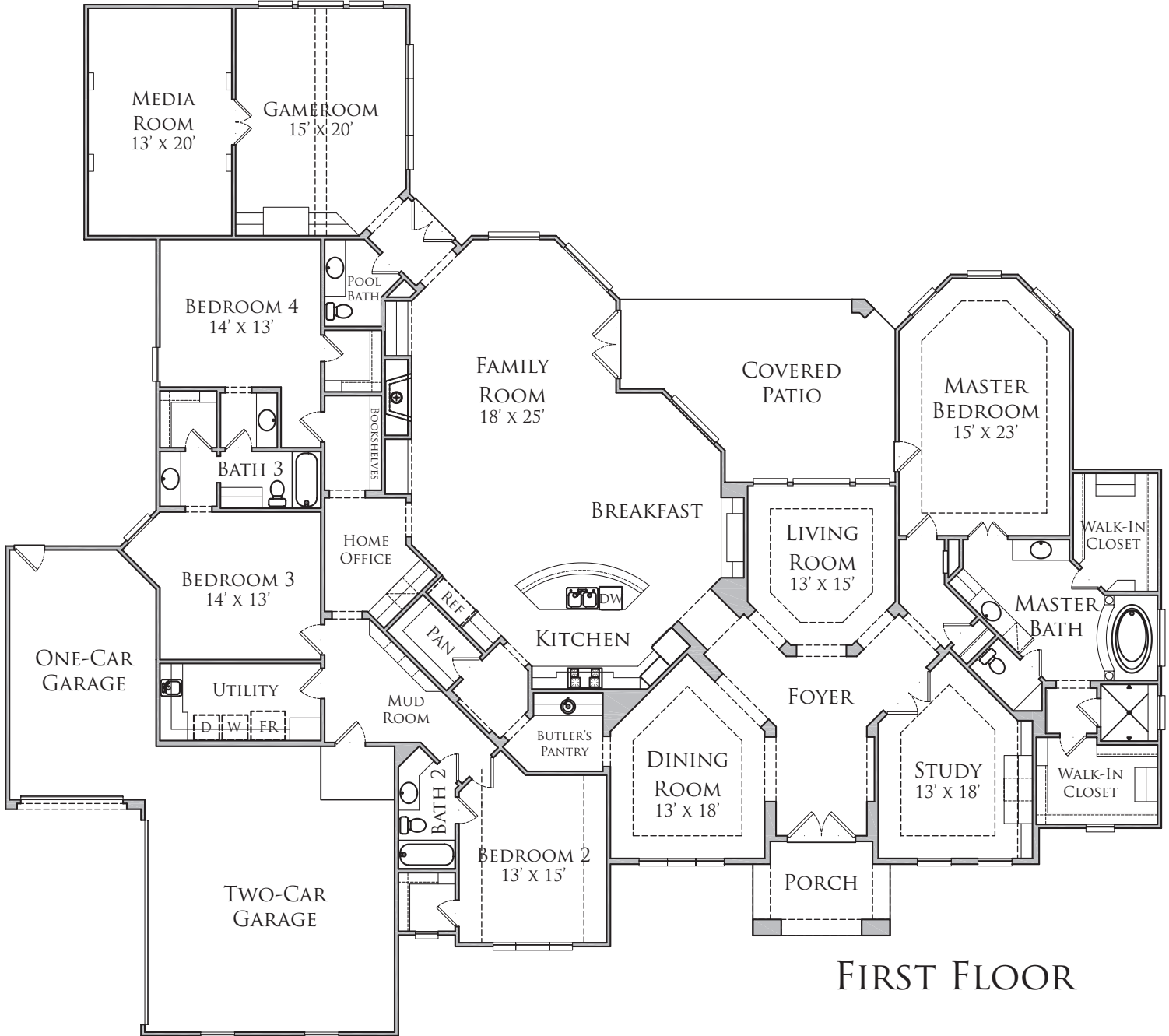
FOUR BEDROOM | THREE AND A HALF BATH  
4,645 SQUARE FEET

[CLICK HERE FOR FIRST FLOOR PLAN](#)

Builder reserves the right to modify floorplans, elevations, and features without notice. Floorplans and exterior renderings are artist's conceptions. Square footage and dimensions are approximate, and may vary by elevation.



# 9 WALKING STICK



[CLICK HERE FOR ELEVATION](#)

Builder reserves the right to modify floorplans, elevations, and features without notice. Floorplans and exterior renderings are artist's conceptions. Square footage and dimensions are approximate, and may vary by elevation.

