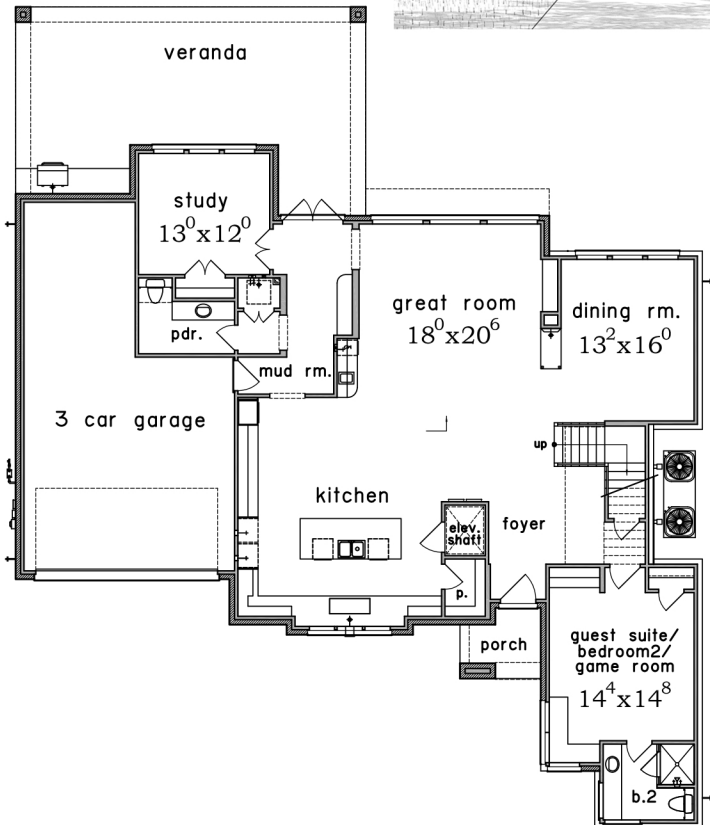


(713) 973-0700



607 Durley Drive



Approx. Living Area	
First Floor	2,200 sq. ft.
Second Floor	2,519 sq. ft.
<b>Total</b>	<b>4,719 sq. ft.</b>

Perimeter 68'-0" x 81'-4"  
Job No. 180303

This drawing is only a representation. Room sizes and square footages are approximate. Builder reserves the right to alter plans, specifications and materials.

