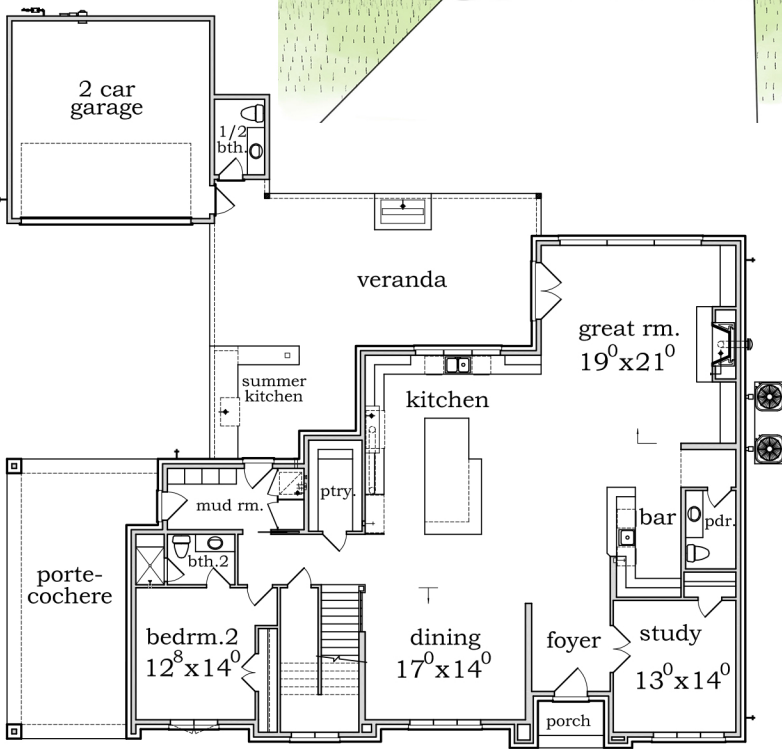


NORTHSTONE
BUILDERS

(713) 973-0700



First Floor Plan

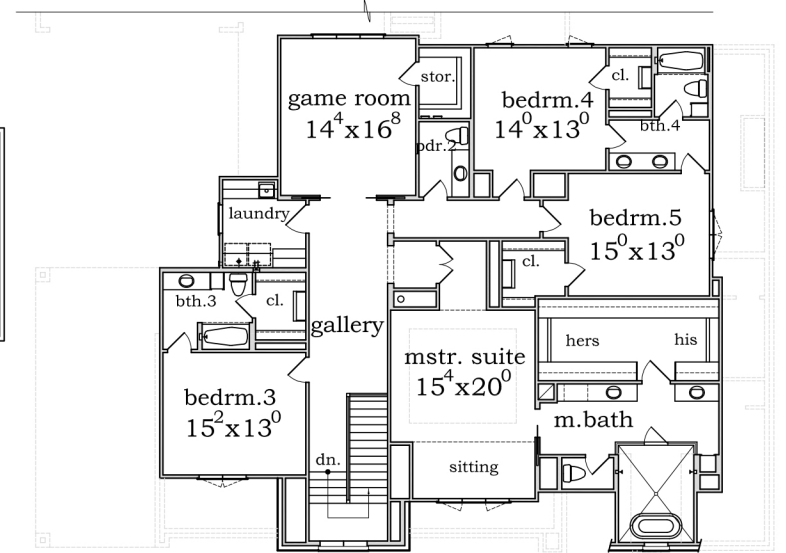
12122 Mossycup Drive

Approx. Living Area

First Floor	2,661	sq. ft.
Second Floor	2,598	sq. ft.
Total	5,259	sq. ft.

Perimeter 78'-4" x 77'-8"
Job No. 00909

This drawing is only a representation. Room sizes and square footage are approximate. Builder reserves right to alter plans, specifications and materials.



Second Floor Plan